

# Ordering Traveler Systems

## 1. Determine System Size

Determine size of traveler system (13, 22, 27, 32, 42, or 64 mm) based on mainsail area, placement on the boom, and mono- or multihull. See **Mainsail Traveler System Size Selection** chart. Typical boat lengths are listed as a guideline only.

### Typical Boat Lengths:

22 mm Small Boat: 6.7 - 8.5 m (20' - 28')  
 27 mm Midrange: 7.9 - 10.7 m (26' - 35')  
 32 mm Big Boat: 10.4 - 12.8 m (34' - 46')

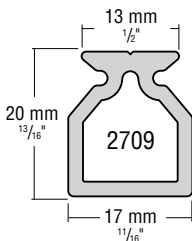
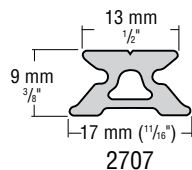
## Mainsail Traveler System Size Selection

Cars	Maximum mainsail area							
	Monohulls				Multihulls			
	End-boom sheeting ft <sup>2</sup>	Mid-boom sheeting m <sup>2</sup>	End-boom sheeting ft <sup>2</sup>	Mid-boom sheeting m <sup>2</sup>	End-boom sheeting ft <sup>2</sup>	Mid-boom sheeting m <sup>2</sup>	End-boom sheeting ft <sup>2</sup>	Mid-boom sheeting m <sup>2</sup>
<b>Dinghies/Light Daysailers</b>								
13 mm Micro CB	110	10.2	85	8	85	8	70	6.5
22 mm Small Boat CB: low-load	125	11.6	100	9.3	100	9.3	80	7.5
22 mm Small Boat CB: standard	160	14.9	135	12.5	135	12.5	110	10.2
22 mm Small Boat CB: high-load:1250 series	200	18.6	160	14.9	160	14.9	135	12.5
27 mm Midrange CB: standard	350	32.5	285	26.5	275	25.5	215	20
<b>Small Offshore Boats/Heavy Daysailers</b>								
22 mm Small Boat CB: standard	150	14	125	11.5	135	12.5	110	10.2
22 mm Small Boat CB: high-load:1250 series	190	17.5	150	14	160	14.9	125	11.5
27 mm Midrange CB: standard	260	24	215	20	215	20	160	14.9
27 mm Midrange CB: high-load	300	28	240	22	240	22	190	17.5
<b>Large Offshore Boats</b>								
32 mm Big Boat CB: standard	425	39.5	350	32.5	350	32.5	300	28
32 mm Big Boat CB: high-load	550	51	450	42	450	42	350	32.5
32 mm Big Boat CB: 2 stand-up toggles/32 mm CRX Roller: 3074	575	53.4	500	46.5	500	46.5	425	39.5
32 mm Big Boat CB: 2 T3201Bs joined by 580	700	65	525	49	525	49	450	42
32 mm Big Boat CB: 2 high-load cars coupled	1100	102	900	83.6	900	83.6	750	69.7
42 mm Mini-Maxi: 3068/32 mm CRX Roller: 3075	1100	102	900	83.6	900	83.6	750	69.7
64 mm Maxi: 3070	1400	130	1100	102	1100	102	900	83.6

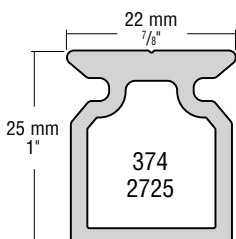
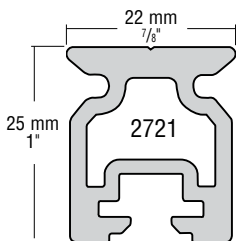
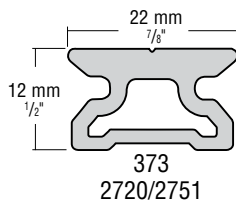
## 2. Select Track

Select size and length of track (sizes listed by width measurement of top of track in millimeters). Choose low-beam track if it will be supported the entire length. Choose high-beam track for spanning companionways, cockpits, etc.

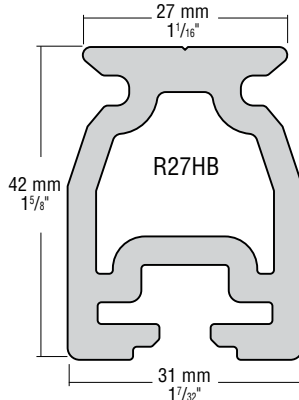
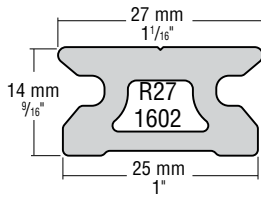
### 13 MM MICRO



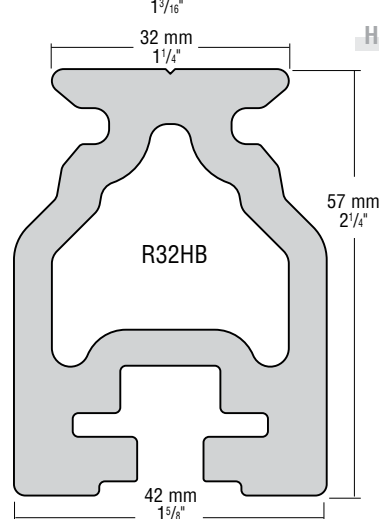
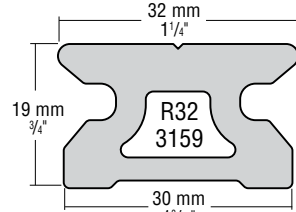
### 22 MM SMALL BOAT



### 27 MM MIDRANGE



### 32 MM BIG BOAT



LOW-BEAM

HIGH-BEAM

